

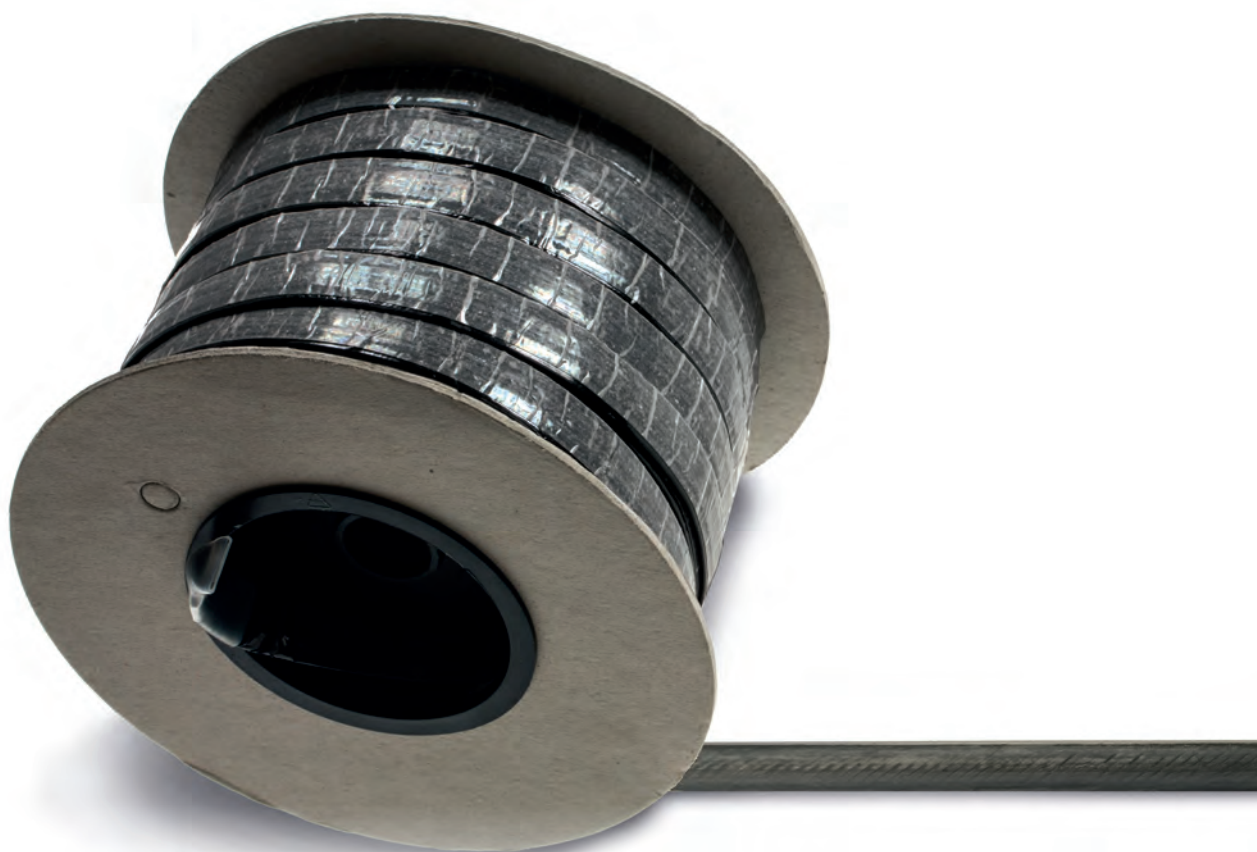
TECHNICAL DATA SHEET

BLACK LOOSE

RIBBON

FOR OUTDOOR/WET

SURFACES



Index

Product details.....	1
Dimension and characteristics.....	2

BLACK LOOSE RIBBON



Warmset's Black Loose ribbon for outdoor and wet places is the ideal solution for installing **electric heating in small irregular areas**. Warmset's technology can be positioned either directly underneath the final surface (installation in **tile glue**) or in **screed**. The product may be installed quickly and easily to help you create a **custom-made heating system**.

Its high mechanical protection guarantees **top performance** and **long product life**, as well as reducing the risk of damage during installation.

The bifilar heating element exploits the convenience of having the power-feed on just one side and the 3-m cold tail, which you can get longer by request. The **ribbon is extruded** with a layer of waterproof resin, and the **connections are made with a special machine** able to guarantee the protection from the water damages

POWERS AND LENGHTS

The product can be made from 10 to 150 linear meter and with all the powers (from 5 to 40 w/m) and tension (24, 48, 120, 230, 240 V)